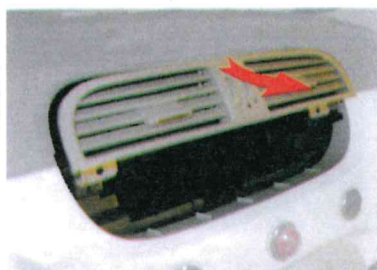
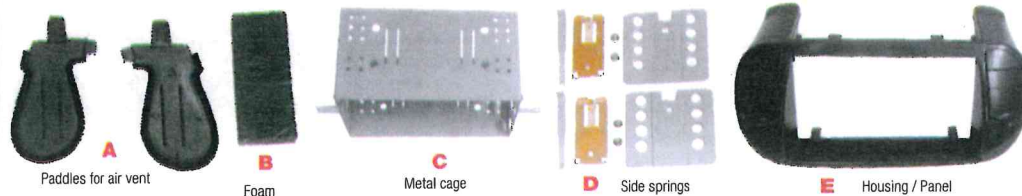


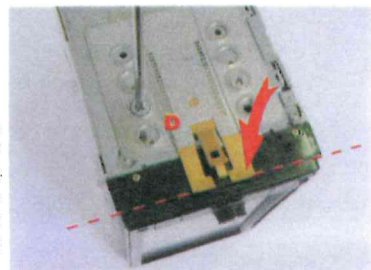


## FITTING INSTRUCTION

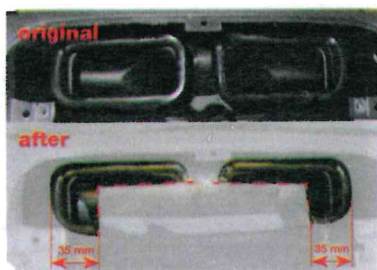
## DOUBLE DIN FITTING KIT - FIAT 500



**1.** Remove the original radio and air-vent cover.



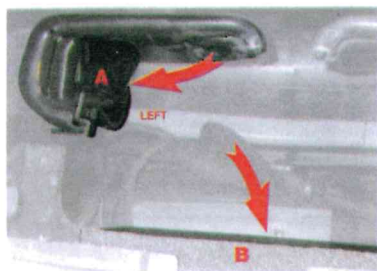
**5.** Apply the springs (**D**) to the Radio / DVD / Navigation unit using the mounting hardware (**D**) as necessary.



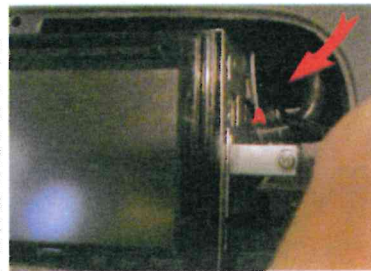
**2.** Without removing it, cut the front of the air-vent duct as shown. It is recommended to offer the cage to the opening to check the measurement before the final cut.



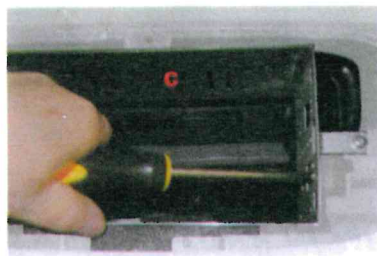
**6.** Insert the Radio / DVD / Navigation unit into the cage until the springs click and engage fully.



**3.** Insert the paddles (**A**) into the cut ducts, using the "U" section to guide the correct position. Remove backing paper and the stick the foam block (**B**) in central position as shown.



**7.** Using a screwdriver, or similar, push the paddles (**A**) against the sides of the Radio / DVD / Navigation unit to ensure correct airflow from the ventilation ducts.



**4.** Locate the cage (**C**) in position, ensuring correct alignment to the foam block and screw, as shown.



**8.** Carefully apply the Housing / Panel (**E**). First locate the top clips and then the lower section.